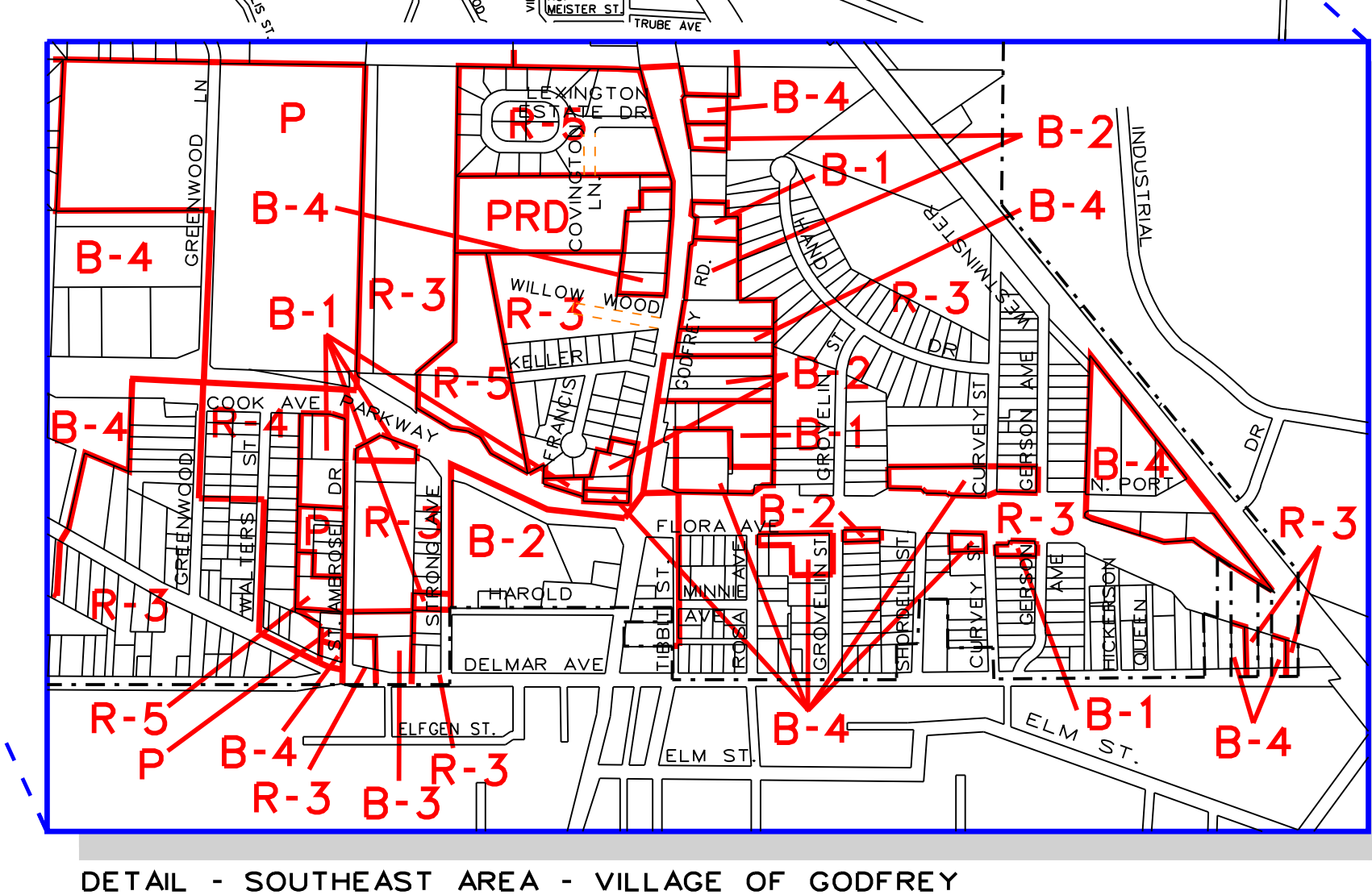


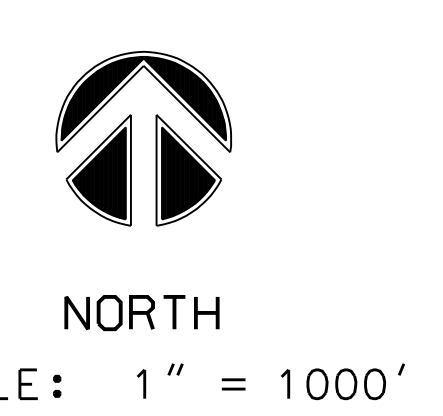
LEGEND

- |         |                                   |     |                              |
|---------|-----------------------------------|-----|------------------------------|
| A       | - AGRICULTURE                     | B-5 | - INTERSTATE BUSINESS        |
| R-1-R-4 | - SINGLE FAMILY                   | M-1 | - LIMITED MANUFACTURING      |
| R-5     | - MULTIPLE FAMILY                 | M-2 | - GENERAL MANUFACTURING      |
| R-6     | - MANUFACTURED HOME/MOBILE HOME   | P   | - PUBLIC / INSTITUTIONAL     |
| PRD     | - PLANNED RESIDENTIAL DEVELOPMENT |     | - FLOODWAY OVERLAY           |
| B-1     | - NEIGHBORHOOD/COMMUNITY          |     | - VILLAGE BOUNDARIES         |
| B-2     | - GENERAL BUSINESS                |     | - ZONING DISTRICT BOUNDARIES |
| B-3     | - CENTRAL BUSINESS                |     | - PRIVATE ROADS              |
| B-4     | - HIGHWAY BUSINESS                |     |                              |



COMPREHENSIVE PLAN  
 VILLAGE OF GODFREY  
 OFFICIAL ZONING MAP

CERTIFICATION  
 MICHAEL J. CAMPION  
 MAYOR  
 ATTEST: PAMELA E. WHISLER  
 CLERK



ADOPTED AUGUST 21, 1995  
 AMENDED DECEMBER 1, 2006

PARSONS  
 BRINCKERHOFF

IN ASSOCIATION WITH:  
 SHEPPARD, MORGAN & SCHWAAB, INC.