



Special points of interest:

- Godfrey— A Beautiful Place to Retire
- Featured Employee— Susan Robbins
- The Great Godfrey Hemp Maze
- Enterprise Zone Officially Amended
- Business of the Month — Theodora Farms
- Oh, and one more thing...

Village of Godfrey Office of Economic Development

6810 Godfrey Road

Phone: 618-466-3325

E-mail: jmager@godfreyil.org

**You can see your future from
here.**



Michael J. McCormick

Mayor

15 Affordable, Beautiful Places To Retire



If you're like most people facing retirement, you don't have an unlimited budget. Even so, that doesn't mean that you have to settle for living out what are supposed to be your golden years in a less-than-desirable locale just to make ends meet.

Retirement should be about enjoying your life with minimal stress and spending some time in the sun. To do that on a budget though, you'll need to choose a retirement destination that's not only affordable but also features a hospitable climate. To assist you in your relocation plans, GOBankingRates looked at hundreds

of U.S. cities to find the cheapest places to retire that feature favorable weather.

More often than not, retirees will find the most affordable and sunniest retirement destinations in the southernmost state of the continental U.S. — Florida. In fact, one third of the 15 U.S. cities on this list are in Florida.

To rank in the study, each city had to meet the following requirements: More than 25% of the population had to be age 65 or older, the median home listing price must have ranked below the national average of \$331,266 and the average annual temperature needed to fall in the moderate range.



Sebring, Florida

- Median home value: \$207,496
- Average temperature (Fahrenheit): 74
- Total population: 10,454
- Percentage of population 65 and older: 25.8%



Tarboro, North Carolina

- Median home value: \$107,526
- Average temperature (Fahrenheit): 60.8
- Total population: 10,806
- Percentage of population 65 and older: 27.6%



Mountain Home, Arkansas

- Median home value: \$171,770
- Average temperature (Fahrenheit): 69
- Total population: 12,463
- Percentage of population 65 and older: 29%



North Fort Myers, Florida

- Median home value: \$315,928
- Average temperature (Fahrenheit): 73.8
- Total population: 42,315
- Percentage of population 65 and older: 47.1%

Zephyrhills, Florida

- Median home value: \$235,248
- Average temperature (Fahrenheit): 72
- Total population: 16,062
- Percentage of population 65 and older: 35.7%

Saint Albans, West Virginia

- Median home value: \$126,358



- Average temperature (Fahrenheit): 55.8
- Total population: 10,078
Percentage of population 65 and older: 25.6%

Winter Haven, Florida

- Median home value: \$266,200
- Average temperature (Fahrenheit): 73.2
- Total population: 42,933
Percentage of population 65 and older: 25.5%

Hot Springs Village, Arkansas

- Median home value: \$264,819
- Average temperature (Fahrenheit): 73
- Total population: 15,562
Percentage of population 65 and older: 62.8%

Leesburg, Florida

- Median home value: \$260,604
- Average temperature (Fahrenheit): 72.2
- Total population: 23,142
Percentage of population 65 and older: 25.5%

Mount Airy, North Carolina

- Median home value: \$146,089
- Average temperature (Fahrenheit): 55.2
- Total population: 10,213
Percentage of population 65 and older: 26.7%

Bullhead City, Arizona

- Median home value: \$310,565
- Average temperature (Fahrenheit): 74.7
- Total population: 40,808
Percentage of population 65 and older: 31%

Rockport, Texas

- Median home value: \$285,679
- Average temperature (Fahrenheit): 71.2
- Total population: 10,815
Percentage of population 65 and older: 28%

Kingsport, Tennessee

- Median home value: \$185,975
- Average temperature (Fahrenheit): 57.5
- Total population: 53,699
Percentage of population 65 and older: 25%

Godfrey, Illinois

- Median home value: \$172,004
- Average temperature (Fahrenheit): 55.3
- Total population: 17,540
Percentage of population 65 and older: 27.6%

Aiken, South Carolina

- Median home value: \$237,763
- Average temperature (Fahrenheit): 63.5
- Total population: 31,428
- Percentage of population 65 and older: 26.1%

Source: <https://www.gobankingrates.com/retirement/planning/cheapest-places-retire-for-beautiful-sunny-weather/>



Family Fun Day

Glazebrook Park

- Food
- Vendors
- Watermelon eating contest
- Inflatables
- Athletic team awards
- Entertainment





Here we are; isn't it GREAT!

Getting To Know Village Staff — Susan Robbins, Deputy Clerk



The Village Clerk's office provides an array of services to Village residence and serves many functions within Village governance. Meet Susan Robbins, Deputy Clerk. She has been in her current job since 2019. Prior to that position, she was employed with Godfrey Township from July 2001 to May 2019. When the Township was eliminated, she moved to the Clerk's office.

Susan is the only employee within the Village of Godfrey whose duties are actually mandated by state statute. Like the Mayor, Clerk and Trustees, she is required to take an official oath of office. As a requirement of her job, Susan must attend annual Municipal Clerk's training.

Susan's daily routine includes serving many functions. She assists the Clerk in assembling documents for Village meetings and keeps a monthly calendar of meetings. She also helps with organizing ordinances and resolutions to be considered by the Board of Trustees. She reports information to the Illinois Municipal Retirement Fund and handles Freedom of Information Act (FOIA) requests.

When logging on to the Village's website, chances are Susan posted the agenda and minutes for the Board of Trustees and Village Committees. If renting the Village Hall meeting room, you will likely be working with Susan. To secure any village licensing requirements, or various permits,

Ms. Robbins can be of assistance.

A unique aspect of the Deputy Clerk's job is to administer services related to the General Assistance program. The General Assistance program provides financial aid to individuals requiring basic maintenance needs on a monthly basis.

"I like being able to help people with their needs, question and concerns. The Clerk's office receives many phone calls from people who do not know what department they need," said Susan.

Ms. Robin's personal interest include spending time with her husband, kids, grandkids and reading.

Where Corn Don't Grow



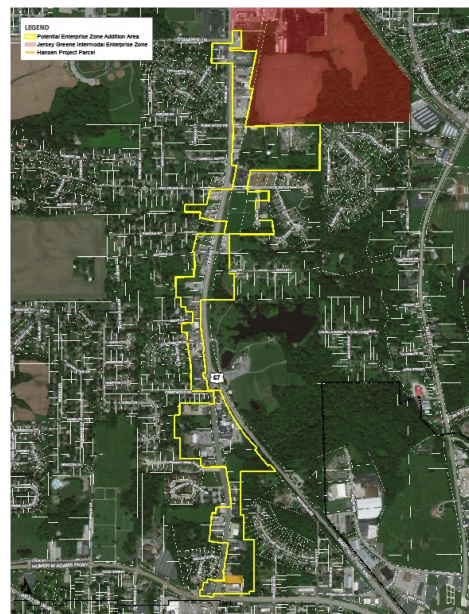
As the Travis Tritt song says, "Don't you ever think about a life where corn don't grow?" Well after twenty years of the Godfrey 'Corn' Maze, the corn don't grow.

With the soil being completely depleted of the nutrients to allow for corn growth, the Great Godfrey Corn Maze will be replaced by the Great Godfrey Hemp Maze.

There are a number of hemp mazes around the country, but none near by — until this year. Maze opening is planned for the end of September at Glazebrook Park

Plan to come by and see something different. It should be a lot of fun!

Godfrey Amends the Enterprise Zone



On May 16, 2022, the Illinois Department of Commerce and Economic Opportunity approved Godfrey's request to amend the Enterprise Zone.

The Illinois Enterprise Zone Program is designed to stimulate economic growth and neighborhood revitalization in economically depressed areas of the state through state and local tax incentives, regulatory relief and improved governmental services. Businesses located or expanding in an Illinois enterprise zone may be eligible for the following state and local tax incentives:

State Incentives and Exemptions (may include):

- Exemption on retailers' occupation tax paid on building materials
- Expanded state sales tax exemptions on purchases of personal property used or consumed in the manufacturing process or in the operation of a pollution control facility
- An exemption on the state utility tax for electricity and natural gas
- An exemption on the Illinois Commerce Commission's administrative charge and telecommunication excise tax

With the amendment, most of the properties southward along Godfrey Road now fall within the Enterprise Zone; increasing their potential for development.



Featured Business of the Month: Theodora Farms

Theodora Farms market is, by intention, very local. They sell their products through their own Community Support Agriculture (CSA). They also attend local farmers markets and provide on-line sales. Products are also provided to local restaurants. Starting May 26 of this year, the Farm is also operating its own FarmStore.

expect to receive weekly or bi-weekly produce boxes containing a seasonal selection of the best our harvests have to offer. The farm grows over 40 types of organic vegetables, including but not limited to: tomatoes, lettuce, carrots, potatoes, onions, and spinach, plus strawberries and sugar snap peas. Each box should consist of seven to ten or more different vegetables, selected to offer peak flavor and quality.

'Tis the season,' for fresh produce and all things local. Maybe it is out of your own garden or a farmers market. If you don't have access to either (and even if you do), there is Theodora Farms. Theodora Farms is a 10-acre certified organic farm in Godfrey, IL, founded in March of 2019 and dedicated to producing top quality seasonal foods. Their vegetables, herbs, flowers, and annual fruits are produced utilizing sustainable practices that build soil and maintain biological diversity.

Theodora Farm's mission is to, "To catalyze the health and happiness of our community through food and agriculture." In keeping with that mission, a goal is to, "Revitalize the Alton/Godfrey area by providing wholesome food and keeping the legacy of farming and agriculture alive," said Kris Larson, General Manager.

The meaning of Theodora is 'gift of god'. In that gift, the farm hopes to build the community's health and happiness through food and agriculture, creating a communal value accessible to all households.



The FarmStore is located at Theodora Farms, where produce is grown and harvested daily from just right outside. They are also supporting our other local businesses and are excited to offer a selection of their products too. Aside from weekly, in-season veggies, there are also other locally produced items such as pasture-raised eggs, honey, milk, jams, seasonal fruits, and more.

Theodora Farms had looked at a number of locations prior to establishing operations. The 30 acre property had been for sale for an extended time. Upon evaluation of the site, it was determined to be an ideal location, have good soil, just the right amount of acreage and ready access to a market.

For those interested in becoming a shareholder in the CSA they can

Theodora Farm can be found at:
4835 N. Alby Rd, Godfrey IL 62035

Hours:
Thursday and Friday 10am - 6pm
Saturday 10am - 2pm

Phone: 618.208.7738

Email: thefarm@theodorafarms.com



Oh, and one more thing.....

So, you can tell by the wrinkles on my face and the lack of hair on my head that I am a 'seasoned' citizen. How happy I am to know that I already live in one of the top most "beautiful" places to retire. Of course without having to read about it, I already knew Godfrey was a great place to live and retire. Now the world is aware of what so many of us already knew!

I'm looking forward with interest on the hemp maze this year. As a kid who grew up in the country, I've seen corn all my life. Nothing new with that. But, I have never seen a hemp maze. In fact, I am not sure I have actually ever seen a real hemp plant before; unless, I saw it in the pasture and did not know what it was. Here at village hall we have been joking about having a "hemp" maze, but actually, hemp has many industrial uses. I am looking forward to seeing the Great Godfrey Hemp Maze at the end of summer.

Some years back, a good yield of corn was seventy bushes per acre; and, it would require working one's tail off to get it. With modern farming techniques, 200 bushes per acre is about average today. Agriculture has gone from a labor intensive industry to a capital intensive one. That, ladies and gentlemen, is how we feed almost eight billion people on the planet. Still, there is something wonderful about locally grown food. Thank you Theodora Farms and the many local growers that we are fortunate to have in our region.



Jim Mager

Economic Development

618-466-3325

jmager@godfreyil.org